

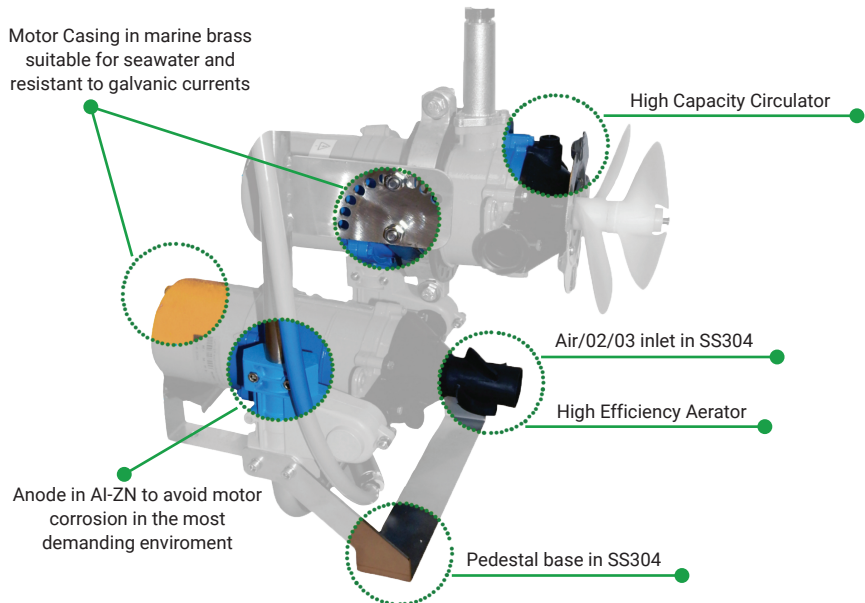
COMBITO

COMBITO is a combined system consisting of two motors, an aerator (Force7) and a circulator (Brio). This combination contributes to moving a great volume of water which is well oxygenated and saturated.

COMBITO is the ideal solution in any situation where a professional and high-performance motor is required, in addition to being versatile and having a lightweight structure. It is used to mix and homogenize nutrients and to have the same temperature and oxygen parameters in the whole water column, increasing the oxygen concentration in large volumes of water. It is also useful to avoid sedimentation on the bottom of the pond/tank and to thus reduce all fermentation problems in relation to anoxia and bad gases.

FEATURES

- Low energy cost
- Best oxygen transfer rate
- Available to dissolve air and/or pure oxygen
- Shallow water configuration available (2 feet version)
- Independent motors for better regulation and best versatility



SUPPORTS



FLOATING INSTALLATION

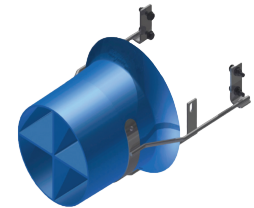
Light-weight and easy to install, for standard aquaculture applications



2 FEET INSTALLATION

Guiding pole system solution, easy to remove. Suitable for deep tank application

OPTIONAL CONVEYOR



MODELS	VOLTAGE	MOTOR	CIRCULATOR			AERATOR		
			MODEL	KW	HP	MODEL	KW	HP
COMBITO	230M-400T	2	BRIO	0.75	1	F7 2	1.1	1.5